

INFORMATION BULLETIN

GHENT

Ghent is a city and a municipality in the Flemish Region of Belgium. It is the capital and largest city of the East Flanders province, and the third largest in the country, exceeded in size only by Brussels and Antwerp. It is a port and university city.

The city originally started as a settlement at the confluence of the Rivers Scheldt and Leie and in the Late Middle Ages became one of the largest and richest cities of northern Europe, with some 50,000 people in 1300.

OFFICIAL SITE OF THE COMPETITION

[Topsporthal Vlaanderen](#)

Zuiderlaan 14
9000 Gent

TICKETING

In total 2000 tickets will be available.

3 days' tickets packages can be purchased here: [Ticketmaster](#)

ACCOMODATION

UCI Official Hotel:

Holiday Inn Gent Expo
Maaltekouter 3
9000 Gent

Tel: +32 9 220 24 24

E-Mail: res.manager@higentexpo.com

HOTEL BOOKING

Accommodation must be organised by the national teams.

Bookings can be done via: info@indoorcyclingghent22.com

A sports hotel suited for smaller delegations is located next to the venue. It can be booked through the LOC.

FOOD AND BEVERAGES

Food and drink stalls will be available for athletes and spectators around the venue.

TRANSPORTATION

[Brussels Zaventem](#) is located 50 km from Ghent city centre.

[Brussels Charleroi](#) is located 100km from Ghent city centre.

A full transport service can be provided between the airports and hotels in Ghent on arrival and departure. The transport service will include the transportation of cycle equipment.

The following costs arise:

**Brussels – Ghent one way**

Regular Car (4 persons)	150 euro
Mini Bus (7 persons)	250 euro
Autocar (20-50 persons)	850 euro

Charleroi – Ghent one way

Regular Car (4 persons)	200 euro
Mini Bus (7 persons)	300 euro
Autocar (20-50 persons)	950 euro

For reservation please contact: info@indoorcyclingghent22.com

All national teams need to take care of their transportation between the hotel and the competition venue. For any information about hiring a vehicle, please contact car rental providers directly (e.g.: www.europcar.com; www.sixt.de; www.hertz.de; etc.).


ACCREDITATION CENTRE & PERMANENCE

Opening hours	Accreditation Centre	Permanence
Wednesday 2 November	14:00 – 20:00	14:00 – 20:00
Thursday 3 November	08:00 – 20:00	08:00 – 20:00
Friday 4 November	08:00 – 20:30	08:00 – 20:30
Saturday 5 November	<i>Accreditations can be picked up at the Permanence</i>	08:00 – 21:30
Sunday 6 November	<i>Accreditations can be picked up at the Permanence</i>	08:00 – 17:30

PROGRAM AND TRAINING SESSIONS

(subject to modifications until all registration sheets have been submitted)

Date	Training	Qualifications	Finals
Wednesday 2 November	16:00 – 22:00		
Thursday 3 November	08:00 – 22:00 <i>(according to schedule)</i>		
Friday 4 November	08:00 – 22:30 <i>(according to schedule)</i>	Cycle-ball Group A/B Single Women Pair Open	Pair Open
Saturday 5 November	07:00 – 22:00 <i>(according to schedule)</i>	Single Men Cycle-ball Group A/B ACT4 Open	Single Women ACT4 Open
Sunday 6 November	07:00 – 16:00 <i>(according to schedule)</i>	Pair Women Cycle-ball Group A/B	Pair Women Cycle-ball Group A Single Men

OFFICIAL OPENING CEREMONY

Friday 4 November 18:30 – 19:00

TECHNICAL MEETINGS

The following meetings will take place in the Topsportal Vlaanderen:

Thursday	3 November	10:00 – 16:00	License check
Thursday	3 November	16:00 – 17:00	Team managers' meeting
Thursday	3 November	18:30 – 19:00	Judging rehearsal
Thursday	3 November	19:00 – 20:00	Ceremony rehearsal
Friday	4 November	08:30 – 09:00	Commissaires' panel meeting

COMMISSAIRES' PANEL

Artistic Cycling

BAYERL Anita (GER) – PCP
BONDUE An (BEL)
RASA Jan (CZE)
MAZZEO Paolo (ITA)
JÄGER Elke (AUT)
ACKERMANN Rafael (SUI)
ULRICH Christelle (FRA)

Cycle-ball

FLEIG Klaus (GER) – PCP
KRATOCHVIL Miroslav (CZE)
LUBETZ Simon (AUT)
ADLER Franz-Josef (GER)
MULLIS Norbert (SUI)

TECHNICAL DELEGATE

KLEIN Meike (GER)

IT REPRESENTATIVE

DAUM Kurt-Jürgen (GER)

DOPING CONTROL OFFICER

OLSEN Ole (DEN)

GENERAL INFORMATION

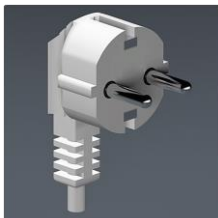
Climate: Moderate Atlantic European climate (average temperature in November between 3°C and 10°C)

Jet lag: UTC/GMT +1

Voltage: Europlug (220-240 volts)



Type C



Type F

Currency: Euro

VISA

Each National Federation/team is responsible to obtain the appropriate entry documentation for their delegation and to control that all passengers entering Belgium are in possession of a valid passport.

INSURANCE

All participants (included but not limited to team officials, riders and their assistants) must bear their own responsibility for any injury, accident and/or lost that may occur during their stay in Belgium while taking part in these championships. Participants should take up insurance before leaving their country to protect themselves against any loss and to indemnify themselves against any claims.



REGISTRATIONS

Only participants born in 2007 or earlier are entitled to participate.

Deadlines:

- National Federations: **31/08/2022**
- Athletes and officials: **10/10/2022**

Registrations forms (National Federations, athletes, and officials) must be sent by e-mail to:

Technical Delegate
Meike Klein
klein-meike@web.de

AND

Indoor Cycling Coordinator
Kim Woelke
indoor@uci.ch

+ copy to dimitricovent@live.be

Evaluation sheets for Artistic Cycling must be sent by e-mail, no later than 10 October 2022, to:

IT Representative
DAUM Kurt-Jürgen
WCC@hallenradsport-daum.de

The points of the evaluation sheets cannot be higher than the planned points in the official entry form by name.

The points on the evaluation sheets cannot be lowered more than 7,5% of the planned points in the official entry form by name.

ORGANISING COMMITTEE

Kreafit
UCI World Championships IC 2022 Ghent
Moorselestraat 127
8560 Wevelgem

Tel: +32 479 678 442
E-Mail: info@indoorcyclingghent22.com
Website: www.indoorcyclingghent22.com

NATIONAL FEDERATION

Belgian Cycling
z.Hd. Dimitri Covent
Rue de Bruxelles 482
1480 Tubize
Belgium

Tel: +49 (69) 967.80.00
E-Mail: dimitricovent@live.be
Website: <http://www.belgiancycling.be/>

The UCI remains available for any further information. You can contact the UCI head office in Aigle, Ms Kim Woelke, Indoor Cycling Coordinator, Tel +41 24 468 58 11, email: indoor@uci.ch.